

Printable Checkers Game

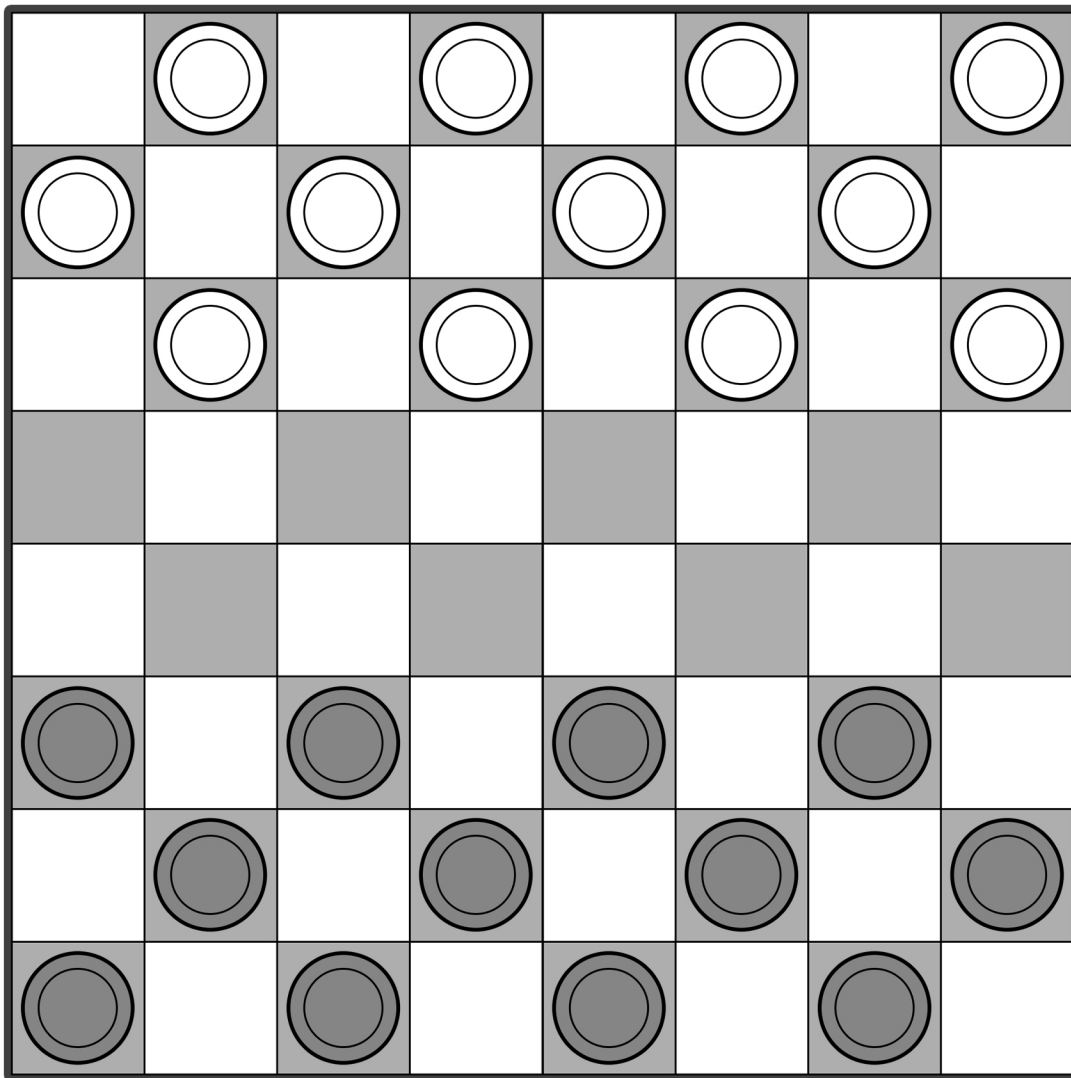
Including Board and Pieces

How to Play

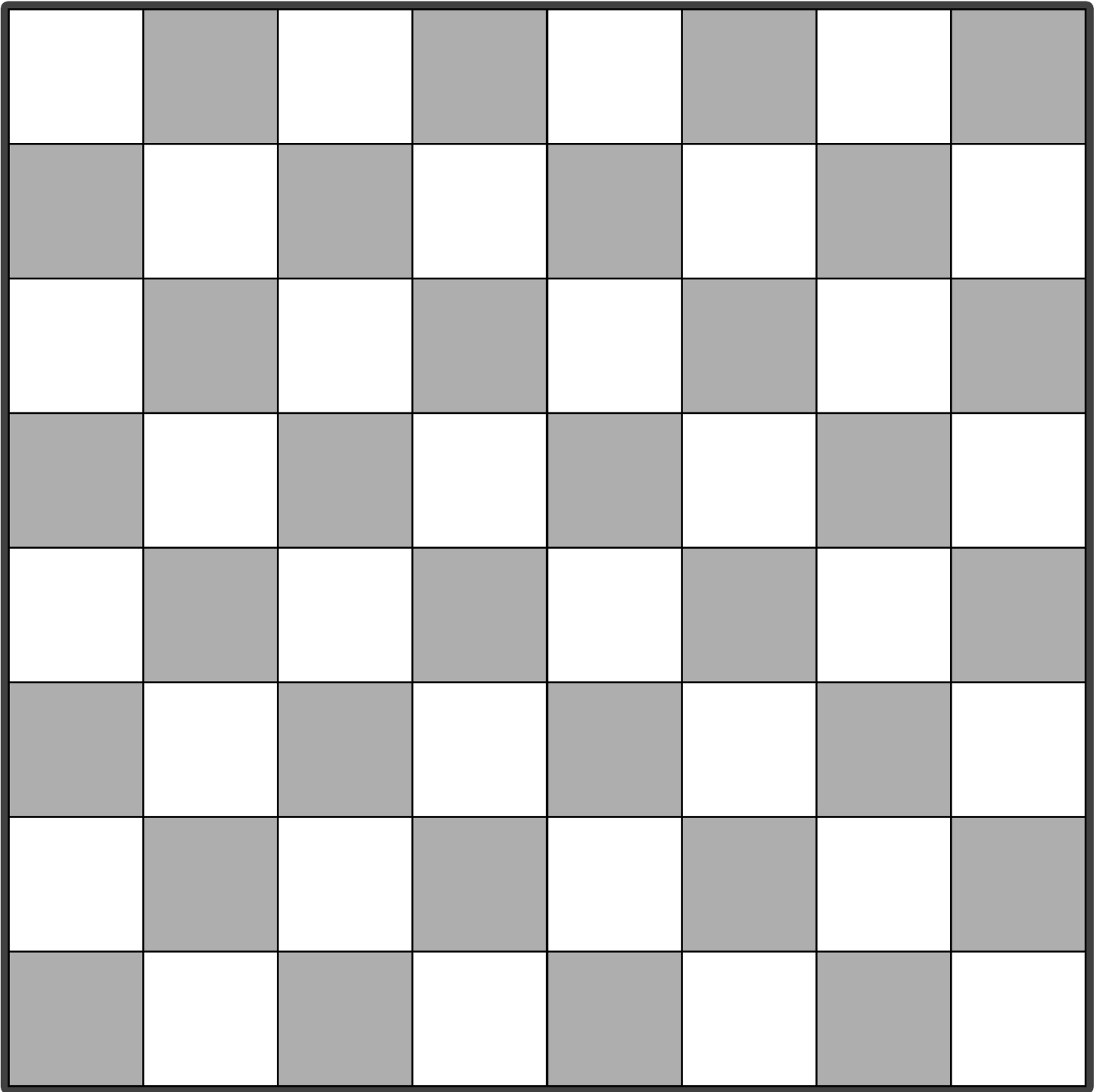
Each player begins with 12 pieces placed on the dark squares of the board. Players take turns moving one piece diagonally forward to an empty dark square. You can capture an opponent's piece by jumping over it to an open square, and if a jump is available, you must take it. When a piece reaches the far side of the board, it becomes a King and can move both forward and backward. The game continues until one player captures all of the opponent's pieces or blocks all possible moves.

Below is what the board should look like at start.

Page 2 and 3 of this document are for cutting out. Page 4 has optional red pieces.



Print and cut out board for play.



Print and cut out pieces for play.

